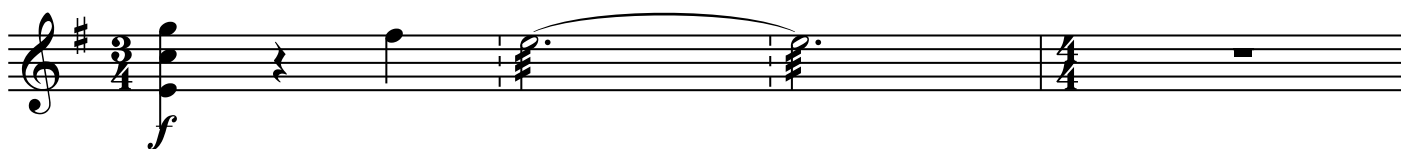




43 原速



49



53



57



61



65



69



73

漸慢



原速

77

81

原速 (如需要, 第84-89小節可高半度演奏)

84

88

92

96

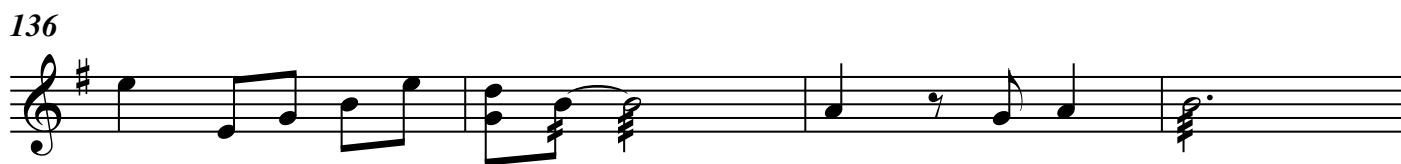
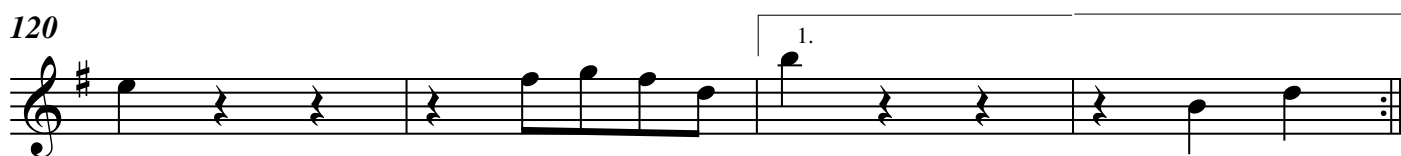
如歌地 (♩ = 108)

4

*mf* 優美地

102

105



144

1.

稍輕快 (♩ = 110)

148

2.

152

156

160

164

168

1.

172

2.

177