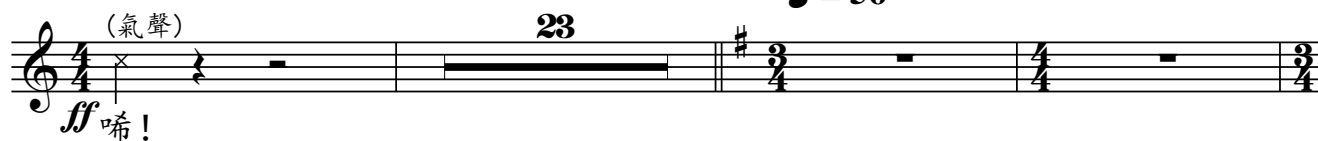


唐響

伍卓賢曲
(2017修訂合奏版)

夢 ♩ = 62 ca. 稍自由

♩ = 56



27



33



39



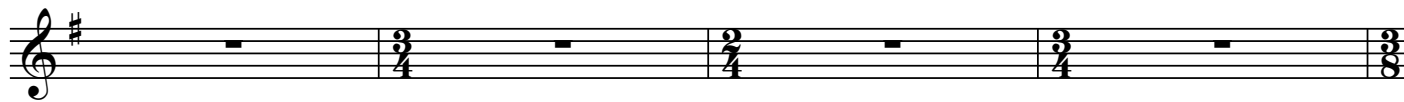
45



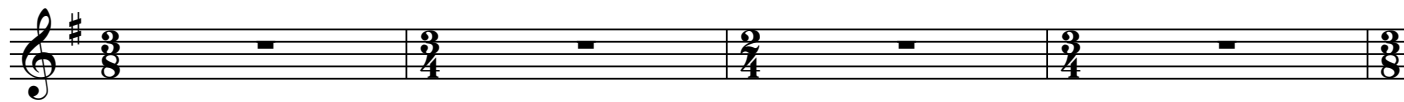
53



57



61



65



mf

69



mf

73



77



mf

83

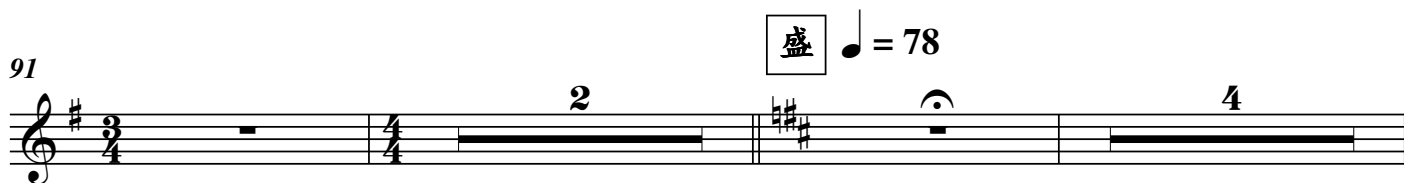


f

87



91



盛 ♩ = 78

mp

99



mp

103



f

107

ff

111 $\text{♩} = 156$

115

119

mf *ff* *mf*

123

127

131

f *p*

135

mf

140

mf

151 18 169



172

176

180

184

188

192

196

200



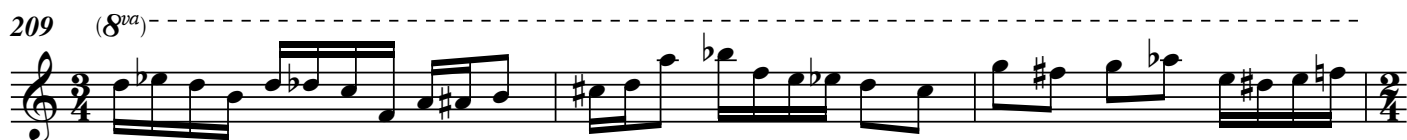
203



206 (8va)



209 (8va)



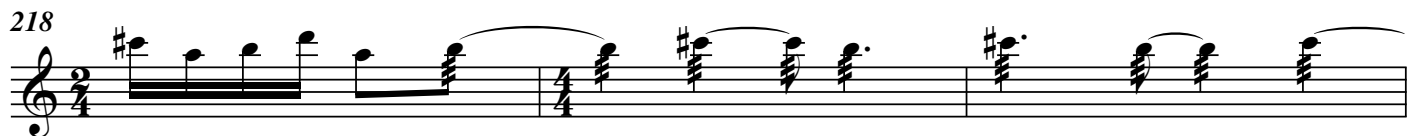
212 (8va)



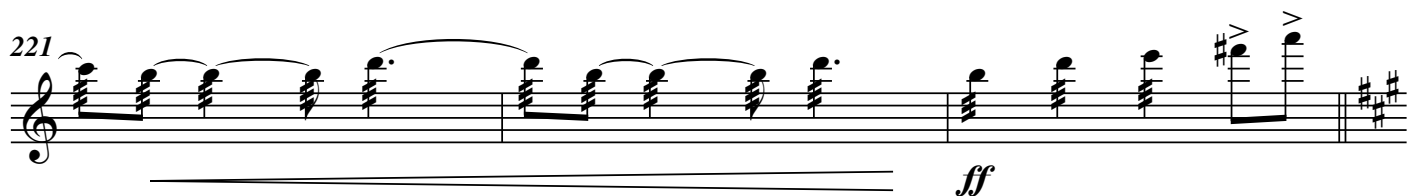
215 (8va)



218



221



224



254

257

260

263

266

269

272

275



278



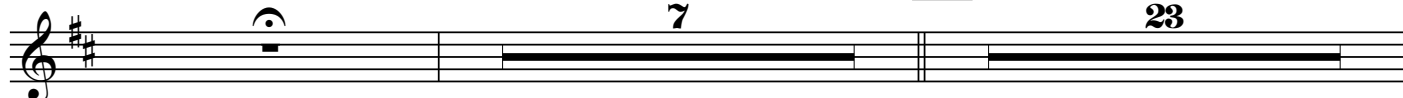
281



284



287



舞

♩ = 62 ca.

23

318

(揚琴)



322 *mf*

325

327

329

331

333

336 *f*

340

342



344



Musical notation for measure 344, featuring a treble clef, a key signature of two sharps (F# and C#), and a complex rhythmic pattern with multiple beams and slurs.

345



Musical notation for measure 345, continuing the melodic and rhythmic development from the previous measure.

346



Musical notation for measure 346, showing a continuation of the piece's intricate texture.

347



Musical notation for measure 347, maintaining the complex rhythmic and melodic structure.

348



Musical notation for measure 348, featuring dense rhythmic patterns and melodic lines.

349



Musical notation for measure 349, showing a continuation of the piece's intricate texture.

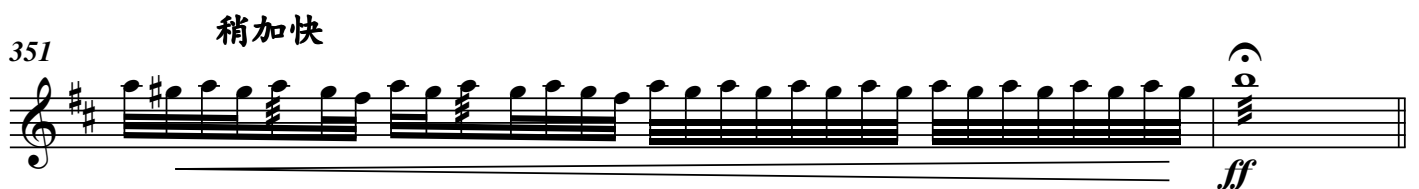
350



Musical notation for measure 350, featuring dense rhythmic patterns and melodic lines.

351

稍加快



Musical notation for measure 351, marked with the instruction "稍加快" (Ritardando) and ending with a double bar line and a forte (*ff*) dynamic marking.

353 同 ♩ = 56 361 ♩ = 66

8

f

363

♩ = 69

365

366

367

368

369

370

371

372

374 (唱) -----
 啊

377 (一邊彈一邊唱旋律)(旋律低8度) -----
mf

381
f

382

384

385

386

387

388

389 稍慢
ff *fff*