

月兒高

古 曲
 彭修文 改編

三弦

(一) 海島冰輪

Largo ♩ = 28 深遠

快起漸慢

Musical notation for the first staff of '海島冰輪'. It begins with a bass clef and a 4/4 time signature. The tempo is marked 'Largo' with a quarter note equal to 28 beats. The mood is '深遠'. The dynamics start with a piano (*p*) and gradually increase to a forte (*f*). There are some rests and a fermata over the first measure.

Musical notation for the second staff of '海島冰輪'. It starts at measure 8. The tempo is marked 'accel.' (accelerando). The mood is '慢起漸快'. The dynamics are marked 'vib.', 'mp', and 'cresc.'.

(二) 江樓望月

Musical notation for the first staff of '江樓望月'. It starts at measure 12. The tempo is marked 'rit.' (ritardando). The mood is 'Adagio con grazioso'. The dynamics are marked 'dim.'. There are some rests and a fermata over the first measure.

(三) 海嶠躊躇

Musical notation for the first staff of '海嶠躊躇'. It starts at measure 26. The tempo is marked 'Adagio'. The mood is '感情洋溢、略有激動'. The dynamics are marked 'mf'.

Musical notation for the second staff of '海嶠躊躇'. It starts at measure 30. The dynamics are marked 'cresc.'.

Musical notation for the third staff of '海嶠躊躇'. It starts at measure 34. There are some rests and a fermata over the first measure.

Musical notation for the fourth staff of '海嶠躊躇'. It starts at measure 39. The dynamics are marked 'vib.p'.

Musical notation for the fifth staff of '海嶠躊躇'. It starts at measure 44. The dynamics are marked 'pp' and 'mf cresc.'.

51 **Lento**

f *ff* *dim.*

55

mp *cresc.*

58 **poco rit.**

mp *dim.* *p*

(四) 銀蟾吐彩

62 **Agitato tempo rubato 情緒激動** *accel.*

66 **4 a tempo** **12**

mp *sub.*

(五) 秋露滿天

84 **慢起漸快** *rit.*

f *ff*

88 *rit.*

f

95 **3** **piu mosso**

101



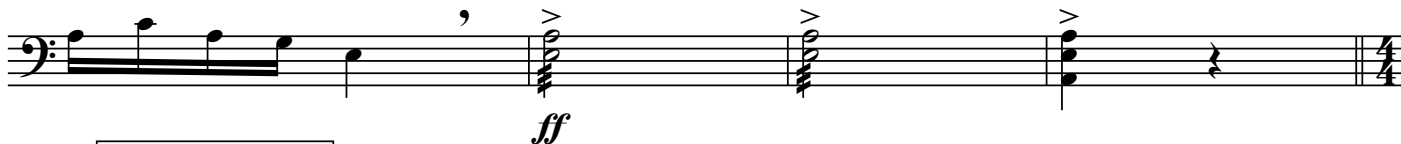
121



125



128



(六) 素娥旖旎

132 **Appassionato con forza**



135



138



141

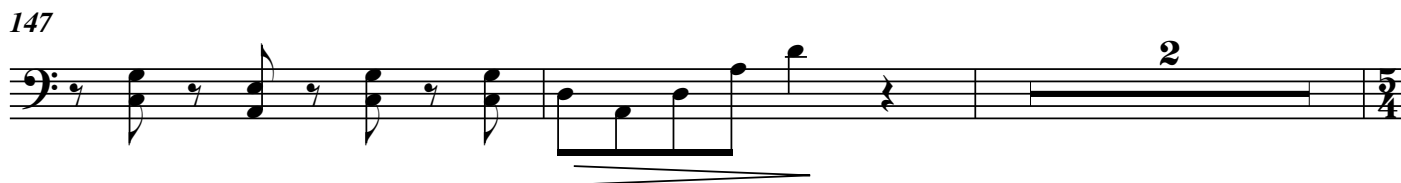


144



f *mf* *f*

147



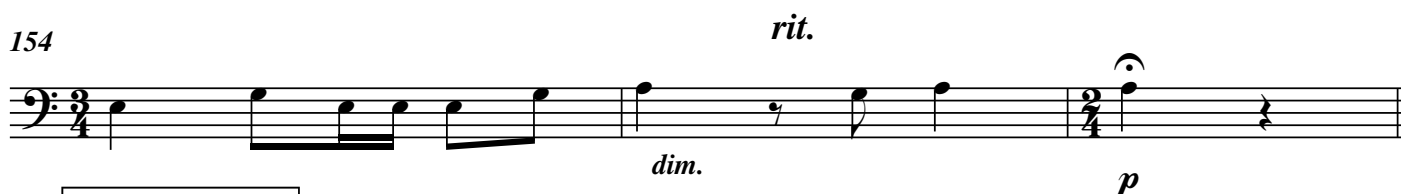
mf *f* *mf* *f*

151



mf *f* *mf*

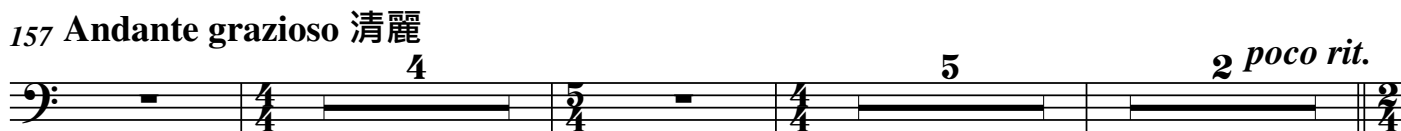
154



mf *f* *p*

(七) 皓魄當空

157 *Andante grazioso* 清麗




mf *f* *mf* *p*

170 (八) 銀河橫渡



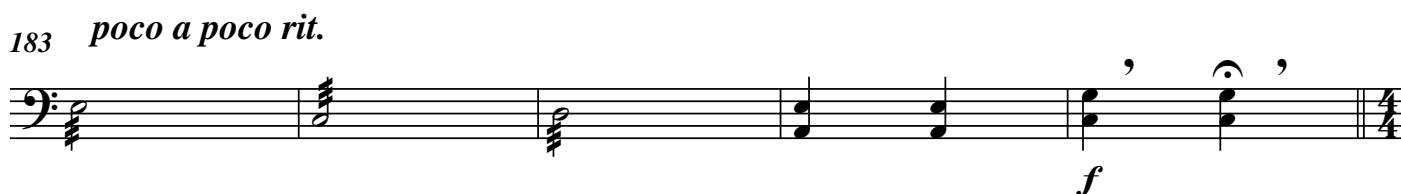
mf *f* *mf* *f* *mf* *f* *mf*

177



mf *f* *mf* *f* *mf* *f*

183 *poco a poco rit.*



mf *f* *mf* *f*

(九) 玉宇千層

188 Grave 11 199 *piu mosso*
mf

201

204 *poco a poco cresc.* *stretto*

207 *f* *ff*

210 *meno mosso* *mp*

213 *rit.*

216 *allargando* *sff* *ff*

219 *lunga morendo* *fff*