

# 賽馬會中樂360 十面埋伏 (中級)

劉文金、趙咏山 編曲  
譚逸昇 改編

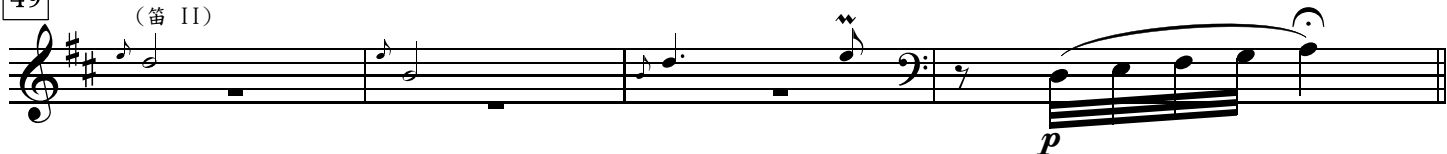
## 【列營】威武地

(大鼓)

45

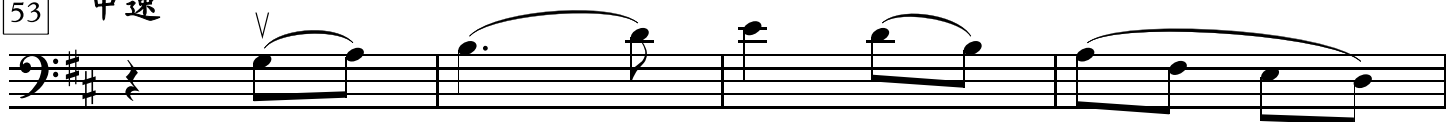


49

【吹打】自由  
(笛 II)

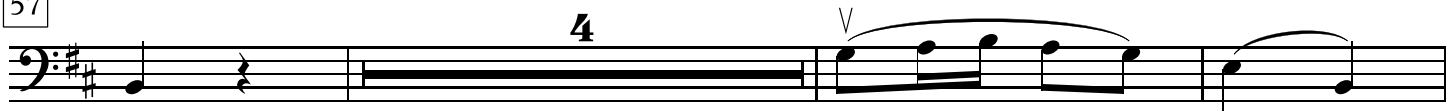
53

中速



57

4



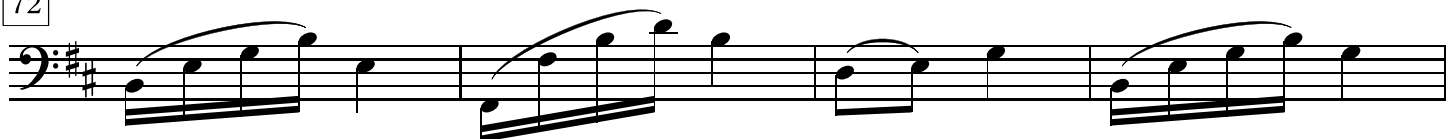
64



68



72



76

rit.

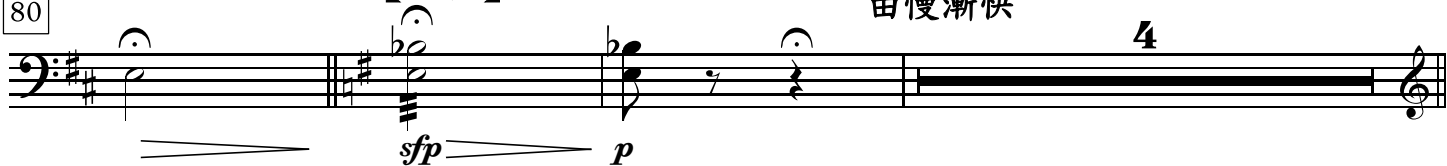


80

【埋伏】

由慢漸快

4



87

(二胡)



91 pizz. *mf* *f*

97 稍漸慢

103 arco *mf* *f*

108 *ff*

113 *mf* *f*

118 *ff*

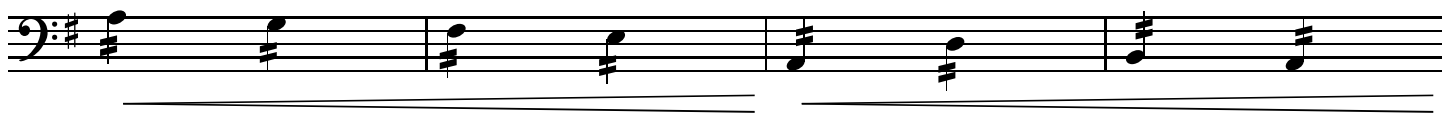
124 稍慢 突轉快板 *f* *mp*

128

132 *f*

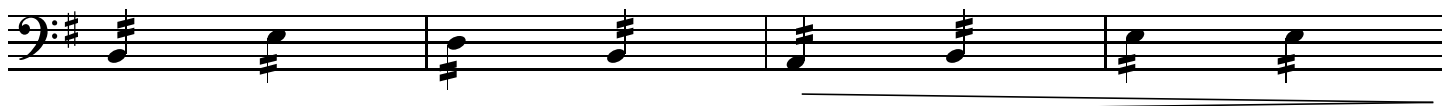
136 *mf*

140



144

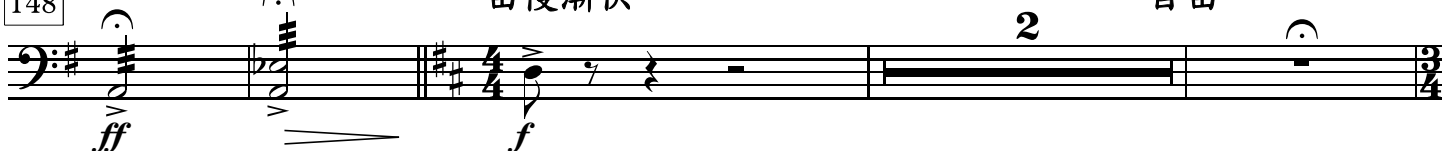
rit.



148

由慢漸快

自由



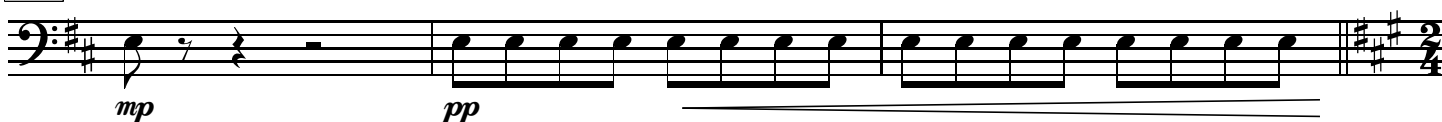
154

rit.



158

快板



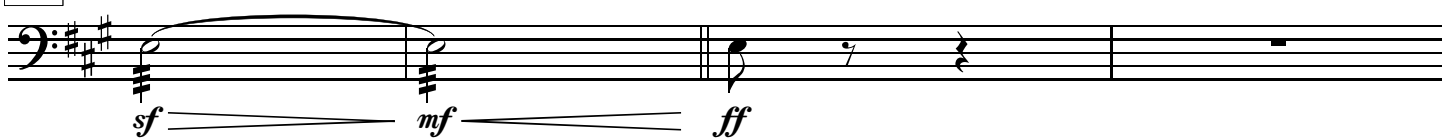
161

rit.



165

快速



169



173

rit.



177

更慢些

2



【烏江】  
中速稍慢

183

Musical notation for measure 183, bass clef, key signature of two sharps (D major), 4/4 time signature. The measure starts with a piano (*pp*) dynamic and contains a half note G2, followed by a repeat sign, then a half note G2, and a series of quarter notes: A2, B2, C3, D3, E3, F3, G3.

188

Musical notation for measure 188, bass clef, key signature of two sharps, 4/4 time signature. The measure contains a half note G2, followed by a half note G2, then a half note G2, and a series of quarter notes: A2, B2, C3, D3, E3, F3, G3. Dynamics include *f* and *p*. An *accel.* marking is present above the measure.

193

Musical notation for measure 193, bass clef, key signature of two sharps, 3/4 time signature. The measure contains a half note G2, followed by a half note G2, then a half note G2, and a series of quarter notes: A2, B2, C3, D3, E3, F3, G3. Dynamics include *p* and *f*.

198

Musical notation for measure 198, bass clef, key signature of two sharps, 4/4 time signature. The measure contains a quarter note G2, followed by a quarter rest, then a quarter note G2, and a series of quarter notes: A2, B2, C3, D3, E3, F3, G3. Dynamics include *mp* and *pp*.

【奏凱】

202

Musical notation for measure 202, bass clef, key signature of two sharps, 4/4 time signature. The measure contains a quarter note G2, followed by a quarter note G2, then a quarter note G2, and a series of quarter notes: A2, B2, C3, D3, E3, F3, G3. Dynamics include *p* and *f*. A tempo marking of ♩ = 48 is present.

207

Musical notation for measure 207, bass clef, key signature of two sharps, 3/4 time signature. The measure contains a quarter note G2, followed by a quarter note G2, then a quarter note G2, and a series of quarter notes: A2, B2, C3, D3, E3, F3, G3. Dynamics include *mf*. A tempo marking of ♩ = 132 is present.

212

Musical notation for measure 212, bass clef, key signature of two sharps, 3/4 time signature. The measure contains a quarter note G2, followed by a quarter note G2, then a quarter note G2, and a series of quarter notes: A2, B2, C3, D3, E3, F3, G3.

217

Musical notation for measure 217, bass clef, key signature of two sharps, 2/4 time signature. The measure contains a quarter note G2, followed by a quarter note G2, then a quarter note G2, and a series of quarter notes: A2, B2, C3, D3, E3, F3, G3. Dynamics include *mp*. Markings for *pizz.* and *arco* are present.

222



226



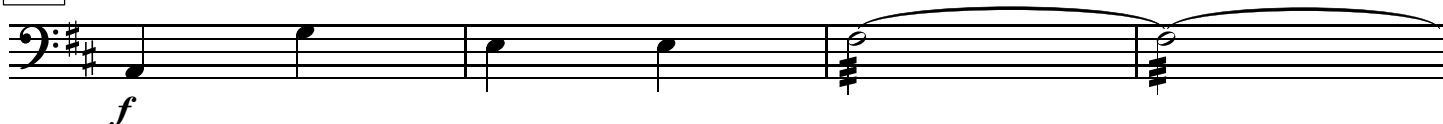
230



234

*molto rit.*

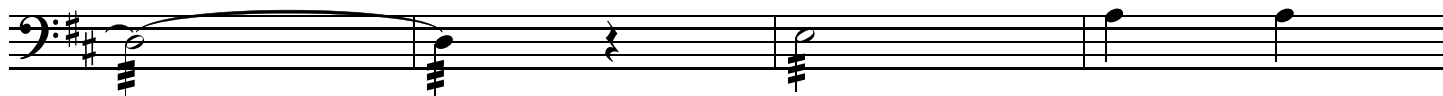
慢



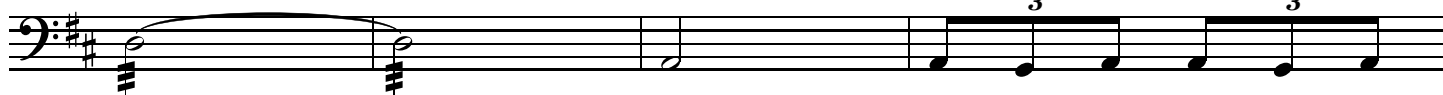
238



242



246



250

